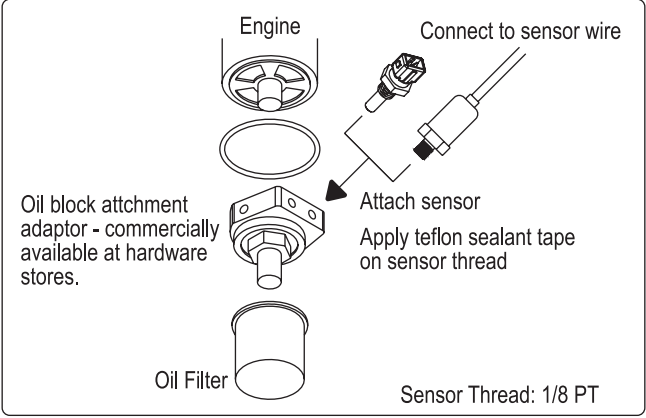


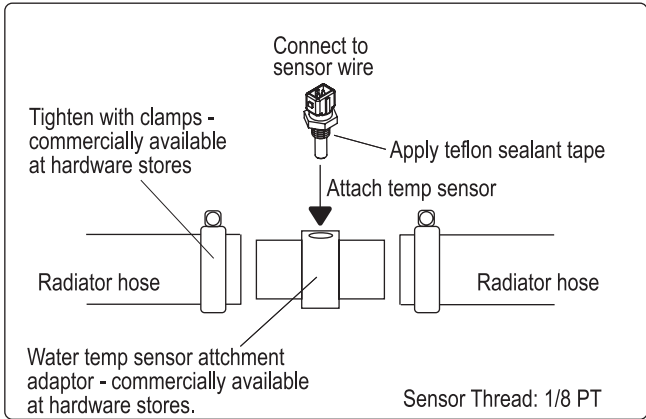
SENSOR INSTALLATION

OIL TEMP / OIL PRESS SENSOR



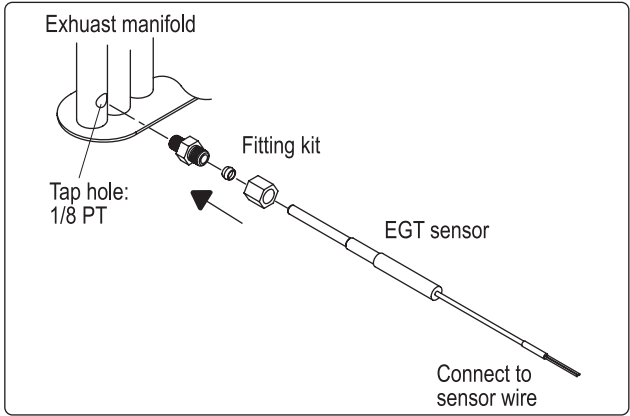
- ⚠ WARNING**
- Apply teflon tape on sensor thread to avoid leaks. Start engine and inspect for leaks after installation.
- CHECK & CONFIRM**
- Check oil level after installation, engine might overheat from too little oil.
 - Make sure the sensor is tighten to the adaptor.
 - Check and make sure the sensor wire is fixed and not twisted from installation. Twisted wires can result in wire cut.

WATER TEMP SENSOR



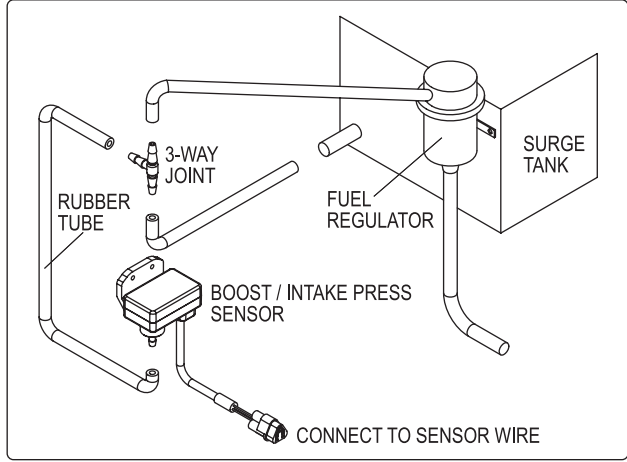
- ⚠ WARNING**
- Apply teflon tape on sensor thread to avoid leaks. Start engine and inspect for leaks after installation.
- CHECK & CONFIRM**
- Check coolant level after installation, engine might overheat.
 - Make sure the sensor is tighten to the adaptor.
 - Check and make sure the sensor wire is fixed and not twisted from installation. Twisted wires can result in wire cut.

EXHAUST TEMP SENSOR



1. Disassemble the compressed fitting kit. (Make sure not to tightened the fitting kit, and crush the busing inside before installation.)
2. Locate the proper installation area on the exhaust manifold and make sure the sensor will not interfere with any component after actual installation. Position the area for drilling in the center of the exhaust pipe. Using a 1/8PT tap, drill a hole for sensor fitting.
3. Attach the sensor fitting. Pass the sensor through the fitting nut, bushing and into the sensor fitting. Adjust the end of the sensor to make sure it is positioned in the middle of the exhaust pipe. Tighten the compressed fitting nut to make sure the installation is secure.

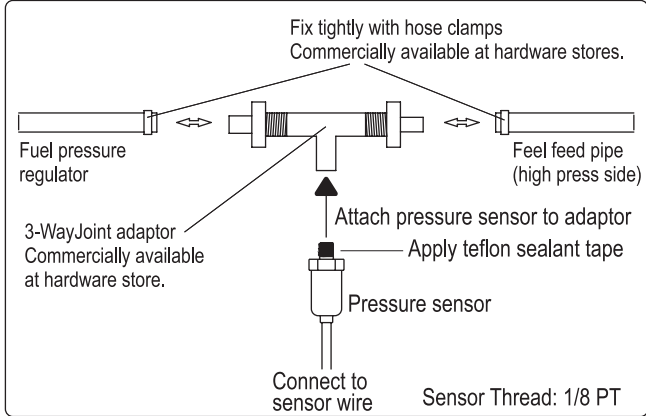
BOOST / INTAKE MANIFOLD PRESS SENSOR



1. Locate a vacuum hose directly coming out of the intake manifold that can handle pressure, cut the vacuum hose and attach the 3-way joint as shown.
2. Attach one end of the rubber tube to the 3-way joint and the other end to the connector of the BOOST SENSOR.

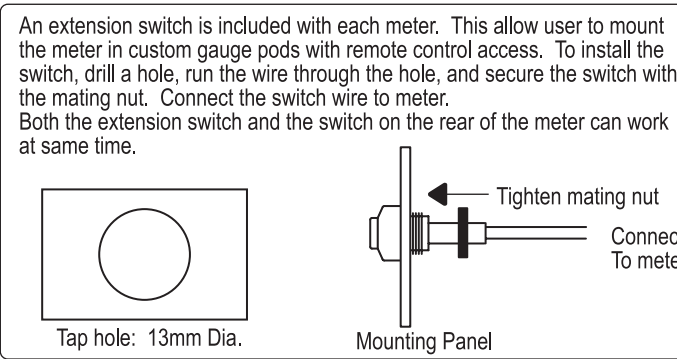
- ⚠ WARNING**
- To prevent tubing from disconnection after installation, use fasteners to secure each attachment.
- CHECK & CONFIRM**
- The BOOST SENSOR must be installed with the tube connector facing down.
 - For vehicles which have a solenoid between the surge tank and the fuel pressure regulator, place the 3-WAY JOINT before the solenoid.

FUEL PRESS SENSOR



- ⚠ WARNING**
- Apply teflon tape on sensor thread to avoid leaks. Before driving, inspect for leaks after installation.
 - Remove the gas cap to relieve any pressure in the fuel tank before cutting the fuel feed pipe.
 - Be certain to ground properly (discharge any static electricity) when cutting the fuel feed pipe.
- CHECK & CONFIRM**
- Make sure the sensor is tighten to the adaptor.
 - Check and make sure the sensor wire is fixed and not twisted from installation. Twisted wires can result in wire cut.

EXTENSION SWITCH INSTALLATION

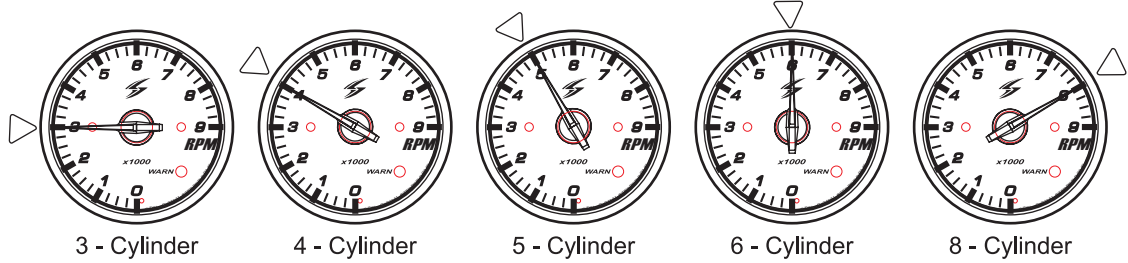


TACHOMETER (RPM) - CYLINDER SETTING

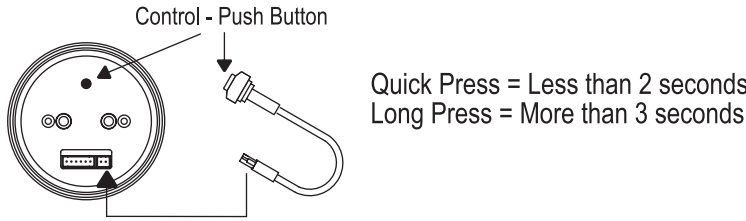
Cylinder type setting must be selected in order for the tachometer to provide correct reading. Once the meter has been properly wired, and main harness connected, the pointer will move to 4000RPM indicating 4-cylinder. LED indicator will be (constant on) indicating 'set up mode'. See diagrams below for cylinder selection reference. (3, 4, 5, 6, 8 cylinder can be selected.)

Select Cylinder - press the control button (quick press - less than 2 seconds) to move the pointer to correct cylinder setting. Pointer will move in a increasing scale and start from lowest selection upon reaching full scale.

Enter Selection - press the control button once (long press - longer than 3 seconds), the cylinder set up has been completed, the pointer will return to 0 RPM (zero position) and then resume normal operation.



OPERATION



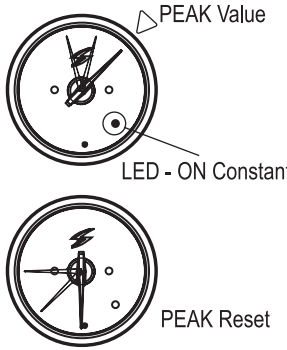
PEAK FUNCTION

PEAK RECALL:

1. Enter view peak: Press control button once (quick press = less than 2 seconds). LED indicator will be constant on, pointer will move to highest value.
2. Exit view mode: Press control button once (quick press), or leave for 5 seconds.

PEAK RESET:

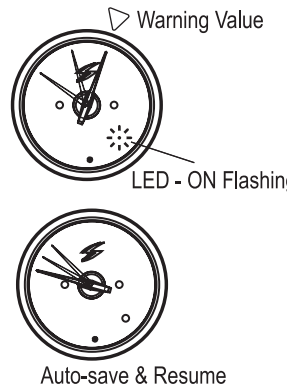
- *Reset function can only be performed during PEAK RECALL mode.
1. Reset Peak: *During* viewing mode, press control button (long press = 3+ seconds), the pointer will reset to zero position. Meter will auto-exit out PEAK RECALL mode, and resume normal operation.



WARNING FUNCTION

WARNING SETTING:

1. Enter warning setting mode: Press control button once (long press = 3+ seconds). LED indicator will be flashing, pointer will move to warning value.
2. Adjust warning value: Press control button to move pointer to desire warning value. *Pointer will move in increasing steps, once reaching full-scale, pointer will return to zero position and start again upward.
3. Save & Exit warning mode: Leave for 5 seconds (no inputs), meter will auto-save.



SHORT CIRCUIT AUTO-DETECT

